

① Gain setting

H : High frequency
L : Low frequency

※The number shows the present set value of gain.

AF : Fishing mode
AC : Cruising mode

② Range mode

R:M : Manual
R:A : Auto range
R:AS : Auto shift

③ Power Voltage

④ Alarm Set Status

← Arrival alarm
← XTE alarm

⑤ Status of [FUNC] key assignment

← Image speed
← Interference rejection
← Color rejection
← Noise rejection
← Shift
← Zoom range
← Zoom start
← A scope
← White line
← Background color

⑥ Time mark

⑦ Rainbow pattern



Select the display menu ([DISP] key)

Press →

Disp
NAV 1
Normal (H)
Zoom (H)
Dual freq
Zoom (L)
Normal (L)
NAV 2

Press →

※Select by performing either operation.

Press →

Press →

Rotate →

Select the setting of preset function ([FUNC] key)

The function differs depending on the [FUNC key setting].
In case of [Image speed]:

Press →

Image Speed
Speed1
Speed2
Speed3
Speed4
Stop
Speed5 (1/1)
Speed6
Speed7
Speed8
Speed9

Press →

※Select by performing either operation.

Press →

Press →

Rotate →

※By continuously pressing the [FUNC] key, a function assigned to [FUNC] key can be selected.

Select the range ([▲RANGE▼] key)

Press →

Range
Auto range
5.0
1 0.0
2 0.0
5 0.0
1 0.0
1 6.0
3 0.0
5 0.0
Auto shift

Press →

※Select by performing either operation.

Press →

Press →

Rotate →

Gain adjust / Gain select ([Knob] key)

Press or Rotate →

Auto adjust
0

Adjust →

Rotate →

Press →

Press →

Gain select
Manual
Cruising
Fishing

Select →

Press →

Press →

Preset the destination / Preset the image ([EVENT] key)

Depending on the [EVENT key set], the function differs.
In case of [Store pos]:

Press → Store the destination.

In case of [Store image]:

Press → Store the image of echo sounder.

Press →

※The navigation data such as GPS is necessary.

Display the menu ([MENU] key)

Press →

Adjust	Image speed	Speed5
D.range	IR	Strong
Display1	Color rejection	0 %
Display1	TVG	Medium
Alarm1	Noise rejection	0
Alarm1	TX power	Auto
NAV	Gain (TD)	
Image	Return	
System		
Next		

Press →

※The menu closes.

※The menu appears.

Power on/Power off ([BRILL] key)

Power on.



Press

Power off.



Keep pressing for more than 3 seconds.

Adjust the brilliance ([BRILL] key)

Press →

Panel brill
1 0

Rotate →

Press →

Press →

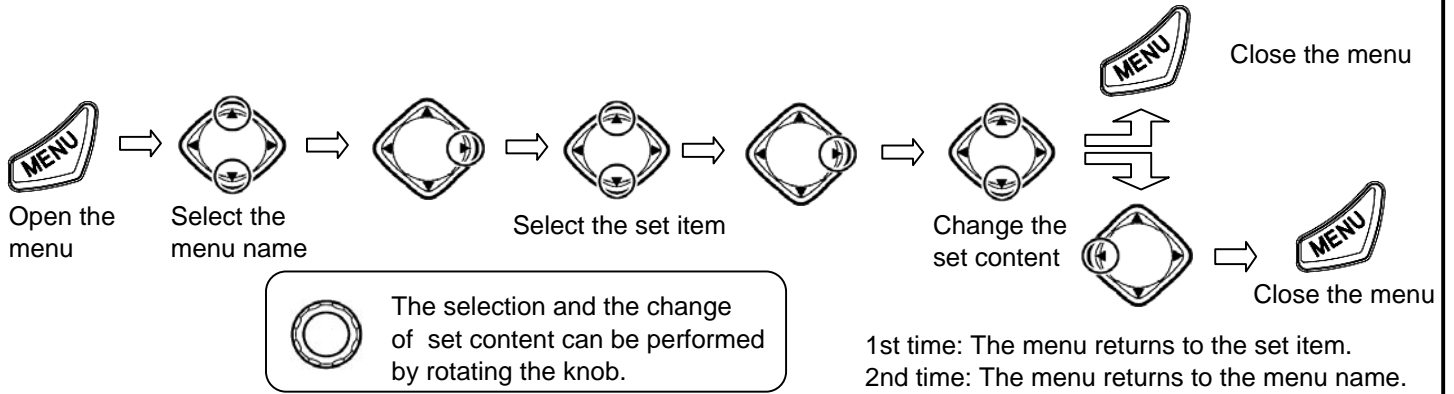
Lcd brill
1 0

Rotate →

Press →

※Every time when pressing the [BRILL] key, the item is alternately displayed.

●How to operate the menu



●Function of Adjust Set Menu

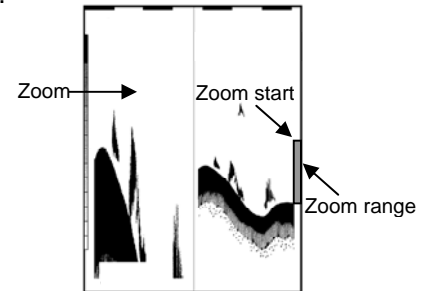
Adjust	Image speed	Speed5 ①
D.range	IR	Strong ②
Display1	Color rejection	0% ③
Display2	Noise rejection	0 ④
Alarm1	TVG	Medium ⑤
Alarm2	TX power	Auto ⑥
NAV	Gain(TD)	⑦
Image	Return	
System		
Next		

- Change the image speed.
The image speed becomes slow in order of [Speed1]→[Speed2]→...→[Speed9].When [stop] is selected, the image stops.
- It rejects the interference with other echo sounder.
When [Strong] is selected, the effect of rejection is strong.
- It rejects the weak noise appeared on the display.
The greater the number is, the stronger the rejection becomes.
- It rejects the speck-like noise appeared on the entire image.
The greater the number is, the stronger the rejection becomes.
- Set the TVG.
The deep depth gain increase in order of [Weak]→[Medium]→[Strong].
- It sets the TX power.
- The reduction in sensitivity due to signal attenuation in Gain(TD) use and so on can be corrected.
You can make numerical value bigger at the time of lack of sensitivity.

●Function of display range set menu

Adjust	Shift step	1m ①
D.range	Zoom type	BTM. ②
Display1	Zoom range	10.0m ③
Display2	Zoom start	0m ④
Alarm1	Disp width	Center ⑤
Alarm2	Range preset	⑥
NAV	Return	
Image		
System		
Next		

- It sets the quantity of movement of shift.
- It selects the kind of the zoom type.
- It sets the range of image selected in ②.
- It sets the zoom starting position of image set in ②.
- It selects the disp width.
- It presets the range.



●Preset of Range

Registration of the range can be easily changed with following operation. Preset the set value suitable for you purpose.

